

Living Environment Information Service Liiteri



LIITERI



Suomen ympäristökeskus
Finlands miljöcentral
Finnish Environment Institute

Contents

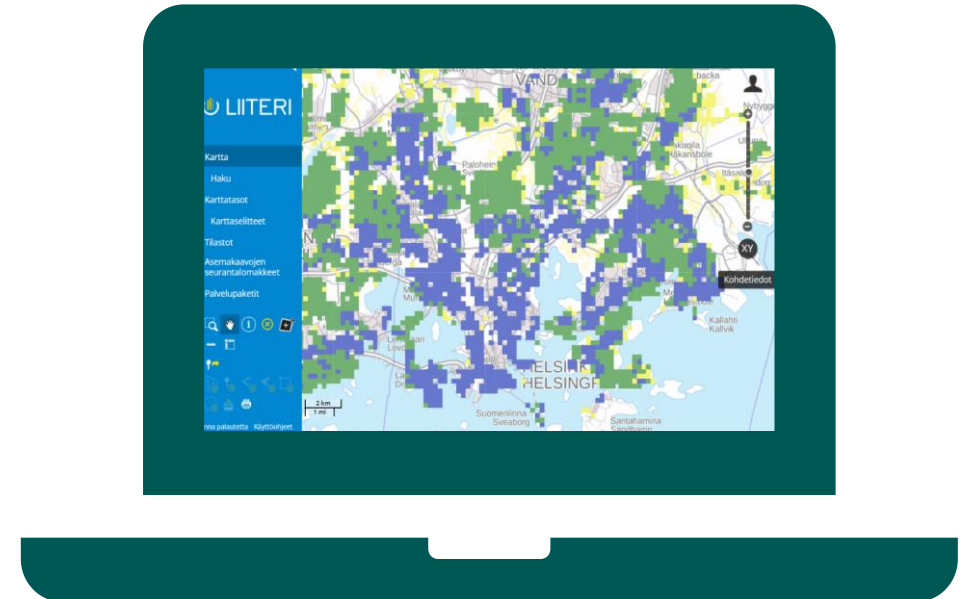
- What is Liiteri?
- What is included in Liiteri?
- Dataproducers and sources
- Users
- Functionalities
- Openness of data
- Examples



Picture: Kai Widell

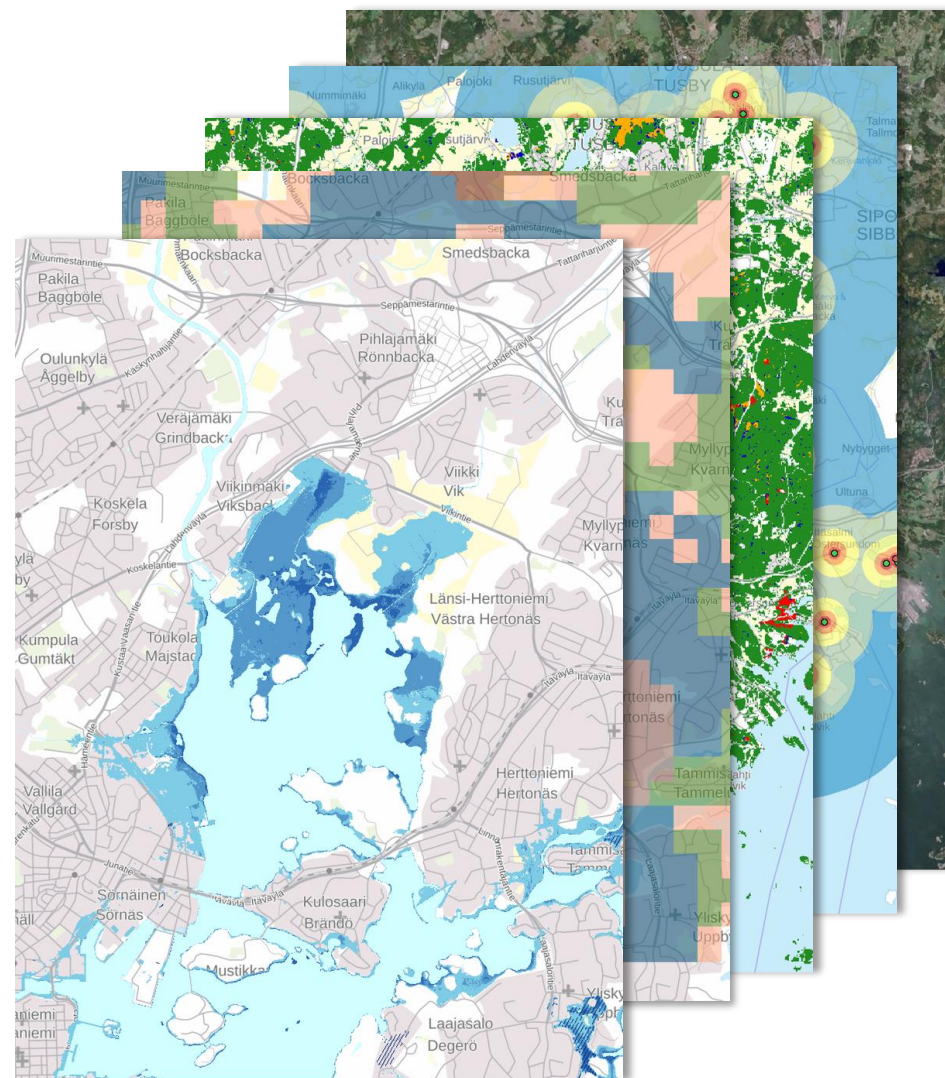
What is Liiteri?

- **Web-based information and map service** focused on the living environment, especially the **built environment** and **land use planning**
- Governed and maintained by **Finnish Environment Institute**



What is included in Liiteri?

- Over thousand map layers and two thousand statistics
- Forms for monitoring local detailed plans
- Local master plans
- Ready-made information packages and analytical services



Liiteri contains data on many themes



Land use planning

Public and private services

Transport and traffic

Maritime spatial planning

Recreational and green areas

Employment and commuting

Demographic development

Urban and spatial structure



Species and habitat types

Cultural environments

Natural resources and environmental protection

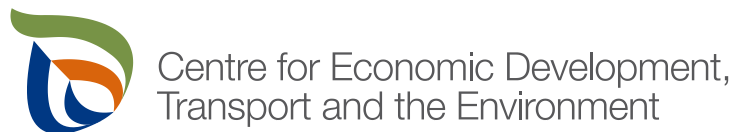
Land use and land cover

Satellite imagery and aerial photographs

Floods, water supply and water bodies

Dataproducers

Finnish institutes and organizations...



...and many more



Users of Liiteri

**Authorities and companies in
land use planning and built
environment sector**



Picture: Kai Widell

**Students and
researchers**



Picture: Kai Widell

Citizens



Picture: Sameli Pihlaja

Liiteri can be used for...



Supporting land use planning



Granting permissions and subsidies related to construction



Formulating strategic plans and programs



Supporting statements



Monitoring the state of the built environment



Study and research

Functionalities

Basic user



View map layers



Search data by address
or municipality



Basic tools, e.g. distance
measure



Print thematic maps

Paid user



Add and import own data



Add and open data from
WMS-services



Advanced tools, e.g. buffer
zones



Save, share and publish maps

Openness of data

- **Open data**
 - Spatial datasets from Syke's download service Lapio
 - Liiteri's open side statistics
 - Forms for monitoring local detailed plans
 - Terms of use: CC BY 4.0 and proper source citations
- **For paid users and authorities**
 - Extensive information content, for example
 - Monitoring System of Spatial Structure and Urban Form (YKR) 250-meter grid data
 - Real estate, building, and spatial information (rhr)
 - Local master plans
 - Confidentiality commitment is required
 - Data protection must be ensured in data handling and visualizations

Examples of using Liiteri



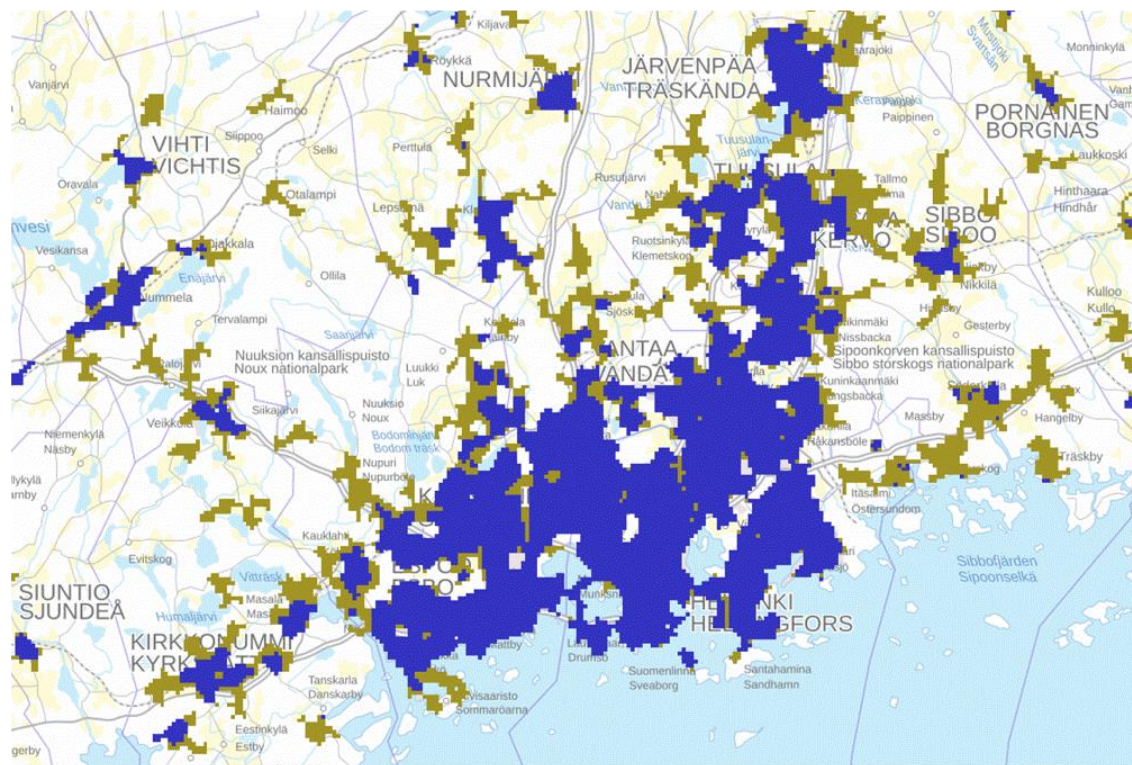
LITERI



Suomen ympäristökeskus
Finlands miljöcentral
Finnish Environment Institute

Viewing maps and time series

Many datasets have time series for temporal exploration of phenomena



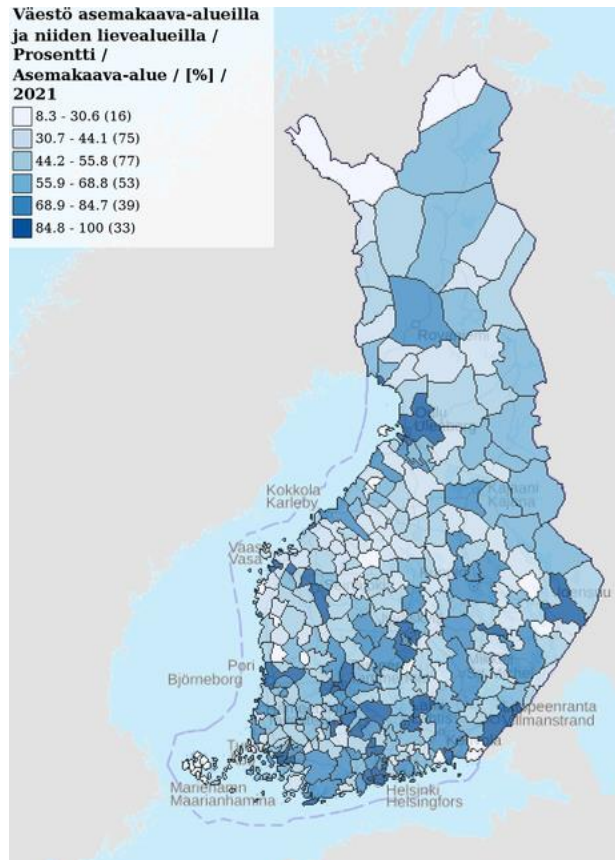
2000

- Densely built localities
- Sparsely built localities

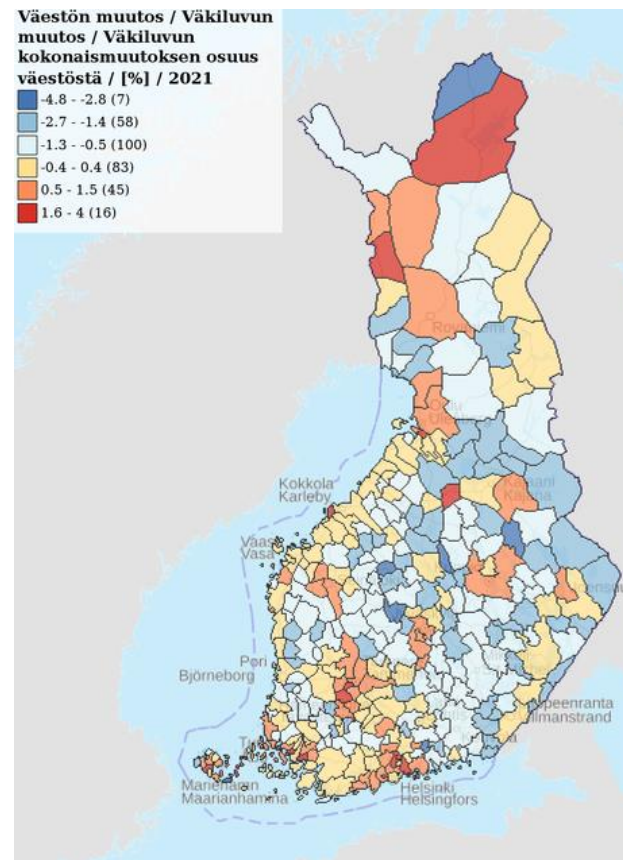
Source: Living Environment Information Service Liiteri, 12.6.2023
© YKR/Syke

Thematic maps

Thematic maps can be made with different spatial divisions



Share of population residing in detail planned land areas, %, 2021



Share of population change from municipality's population, %, 2021

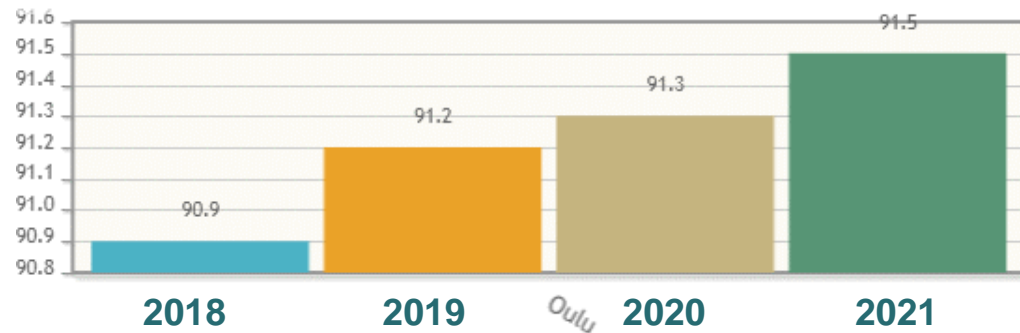
Liiteri offers customization options for classification, map colors etc.

Source: Living Environment Information Service Liiteri, 12.6.2023
 © Väestötietojärjestelmä/Digi- ja väestötietovirasto, YmpäristöELYt, Suomen ympäristökeskus : 2010 -

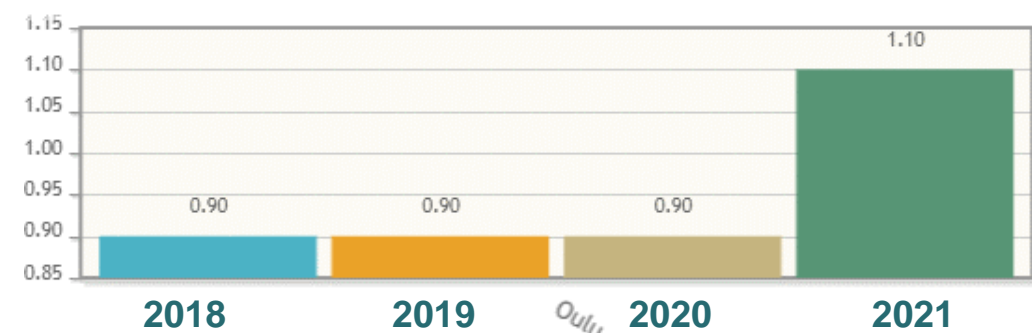
Statistics

**Users can calculate statistics for different spatial and functional areas.
Paid users can import or draw own areal divisions for statistical calculations.**

Share of population (%) residing in detail planned land area in Oulu, between 2018-2021



Population change (%) from Oulu's total population, between 2018-2021



Source: Living Environment Information Service Liiteri, 12.6.2023
© Väestötietojärjestelmä/Digi- ja väestötietovirasto, YmpäristöELYt, Suomen ympäristökeskus : 2010 -

**Liiteri offers a basic visualization of statistics.
It is also possible to export data to a CSV file for your own visualizations
and further analysis.**

Thank you!

More information at:

www.syke.fi/en-US/Services/Living_environment_information_service_Liiteri

or email: Alu_tuki@syke.fi



Suomen ympäristökeskus
Finlands miljöcentral
Finnish Environment Institute



LIITERI